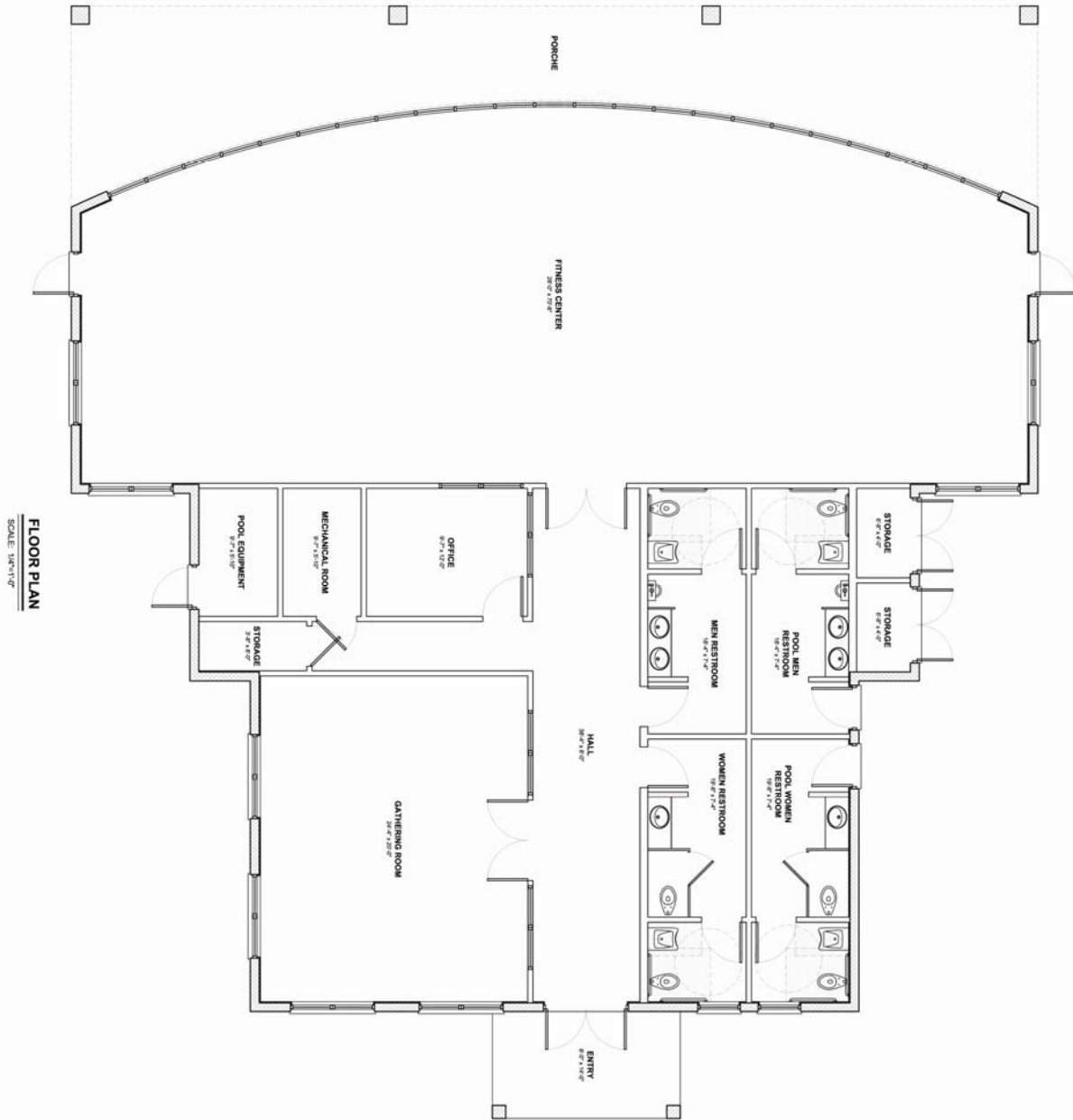




FIRST STREET  
VILLAGE

UPTOWN LIVING



FLOOR PLAN  
SCALE: 1/8"=1'-0"

2110 West First Street #102 | Fort Myers, FL 33901 | 800.238.5994 | [www.firststreetvillage.com](http://www.firststreetvillage.com)

The above drawing is conceptual only and is subject to change without notice at the discretion of the developer. The residence's square footage totals indicated on floor plan are approximate and may vary with actual construction.



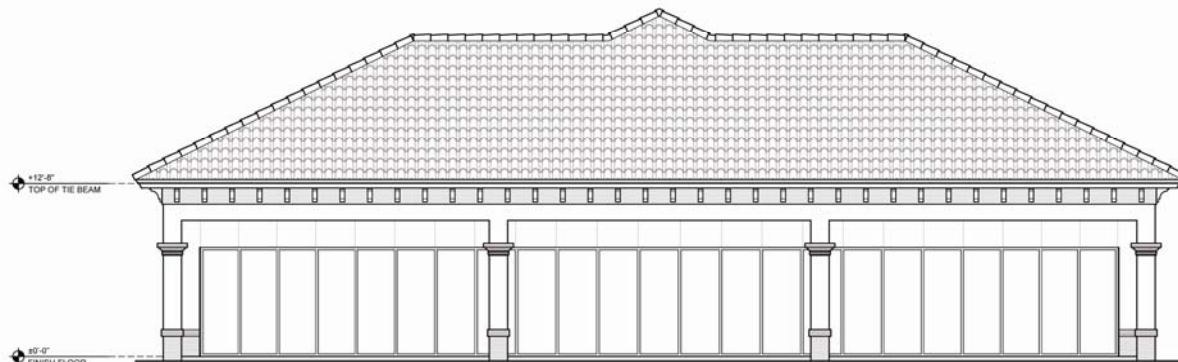
FIRST STREET  
VILLAGE

UPTOWN LIVING



**FRONT ELEVATION**

SCALE: 1/4"=1'-0"



**REAR ELEVATION**

SCALE: 1/4"=1'-0"

2110 West First Street #102 | Fort Myers, FL 33901 | 800.238.5994 | [www.firststreetvillage.com](http://www.firststreetvillage.com)

The above drawing is conceptual only and is subject to change without notice at the discretion of the developer. The residence's square footage totals indicated on floor plan are approximate and may vary with actual construction.